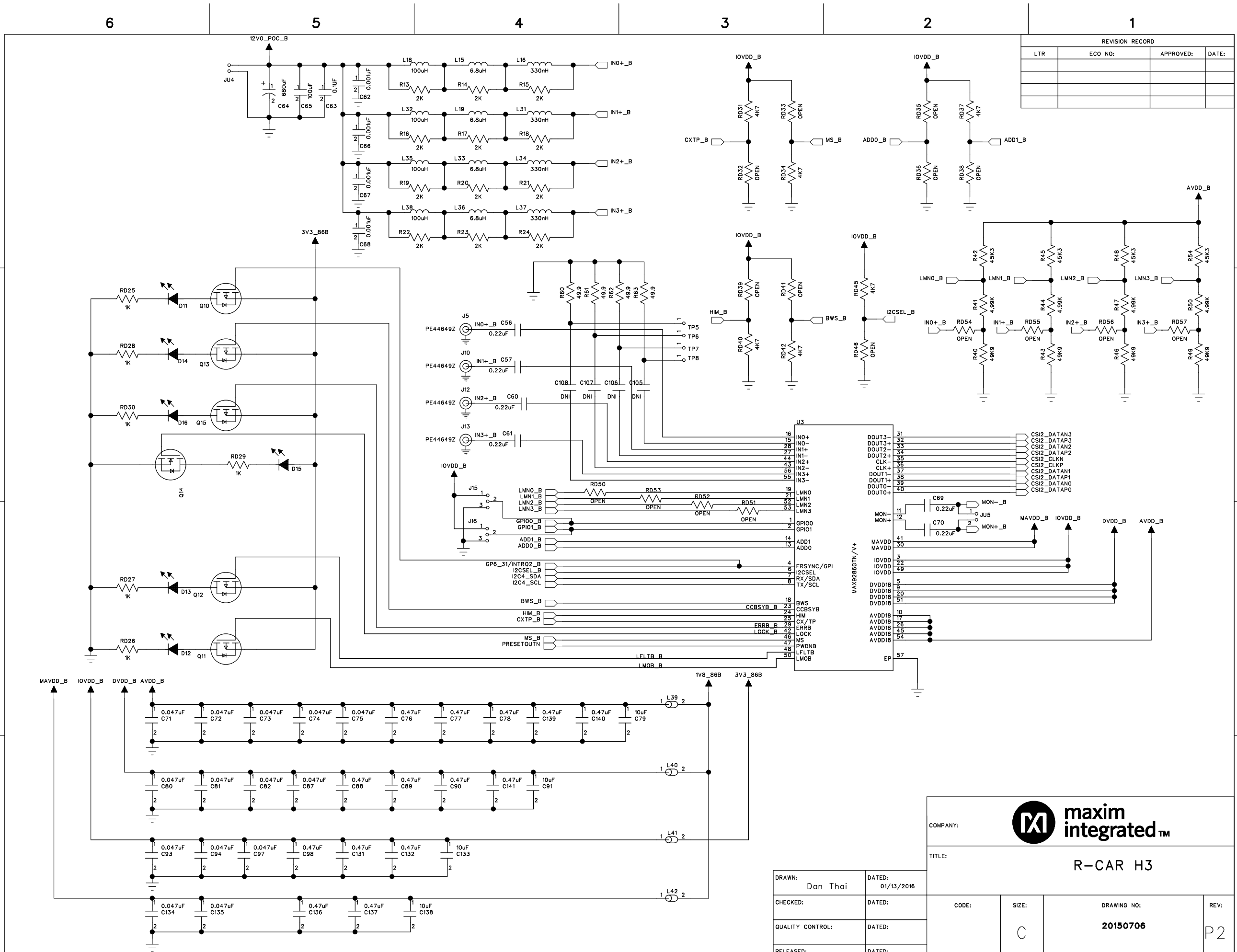



REVISION RECORD			
LTR	ECO NO:	APPROVED:	DATE:

COMPANY: **maxim integrated™**

TITLE: **R-CAR H3**

DRAWN: Don Thai	DATED: 01/13/2016	CODE:	SIZE: C	DRAWING NO: 20150706	REV: P2
CHECKED:	DATED:	QUALITY CONTROL:	DATED:	SCALE:	SHEET: 1 OF 5
RELEASED:	DATED:				

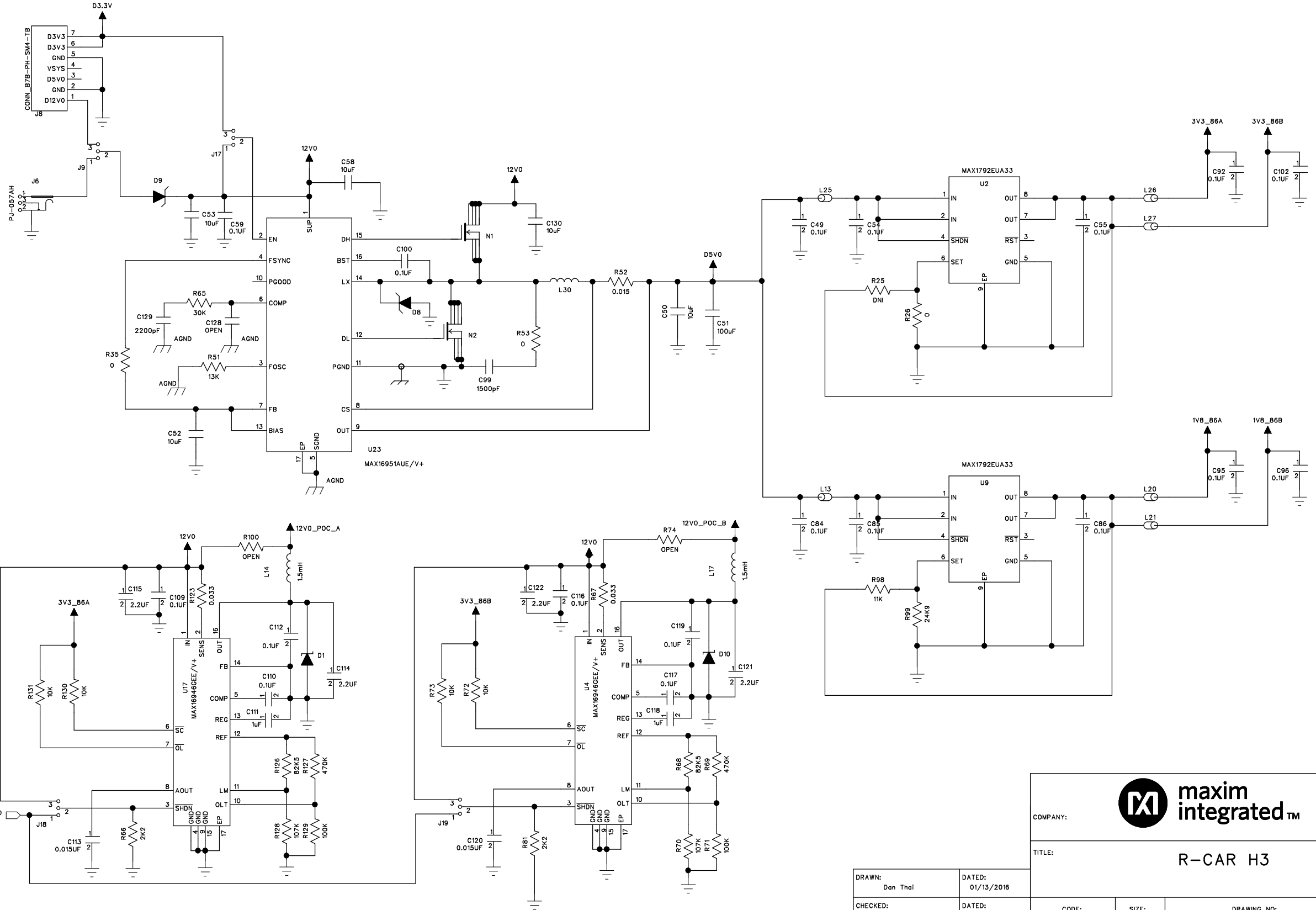


COMPANY:  maxim integrated™			
TITLE: R-CAR H3			
DRAWN: Dan Thai	DATED: 01/13/2016	CODE:	REV: P2
CHECKED:	DATED:	SIZE: C	DRAWING NO: 20150706
QUALITY CONTROL:	DATED:	SHEET: 2 OF 5	
RELEASED:	DATED:	SCALE:	

6 5 4 3 2 1

REVISION RECORD			
LTR	ECO NO:	APPROVED:	DATE:

D
C
B
A



maxim integrated™

COMPANY: maxim integrated™

TITLE: R-CAR H3

DRAWN: Dan Thai	DATED: 01/13/2016	CODE:	SIZE: C	DRAWING NO: 20150706	REV: P2
CHECKED:	DATED:	SCALE:		SHEET: 3 OF 5	
QUALITY CONTROL:	DATED:				
RELEASED:	DATED:				

6

5

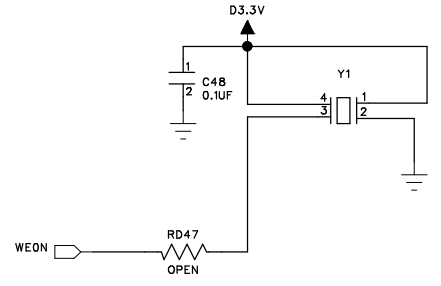
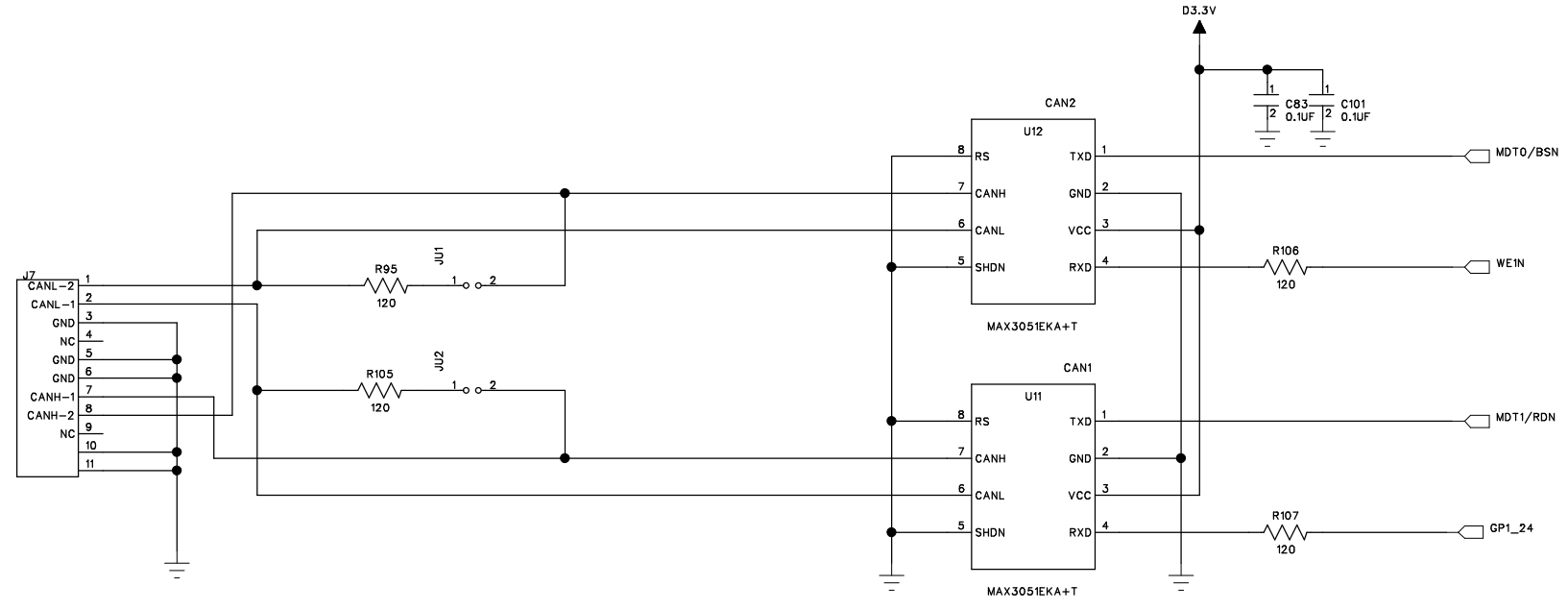
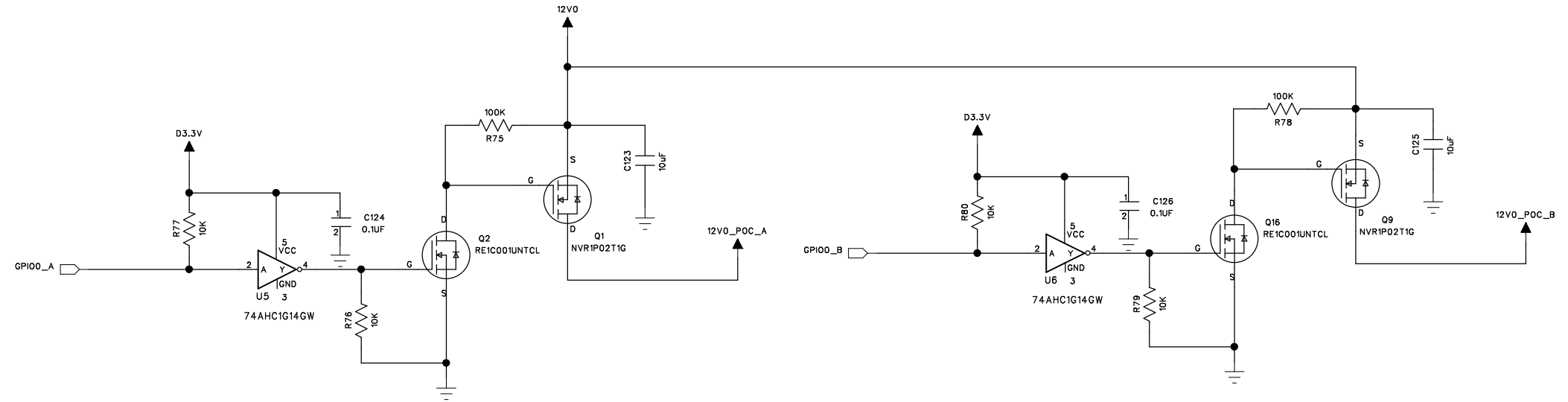
4

3

2

1

REVISION RECORD			
LTR	ECO NO:	APPROVED:	DATE:



COMPANY: **maxim integrated™**

TITLE: **R-CAR H3**

DRAWN: Dan Thai	DATED: 01/13/2016	CODE:	SIZE: C	DRAWING NO: 20150706	REV: P2
CHECKED:	DATED:	SCALE:		SHEET: 4 OF 5	
QUALITY CONTROL:	DATED:				
RELEASED:	DATED:				

6

5

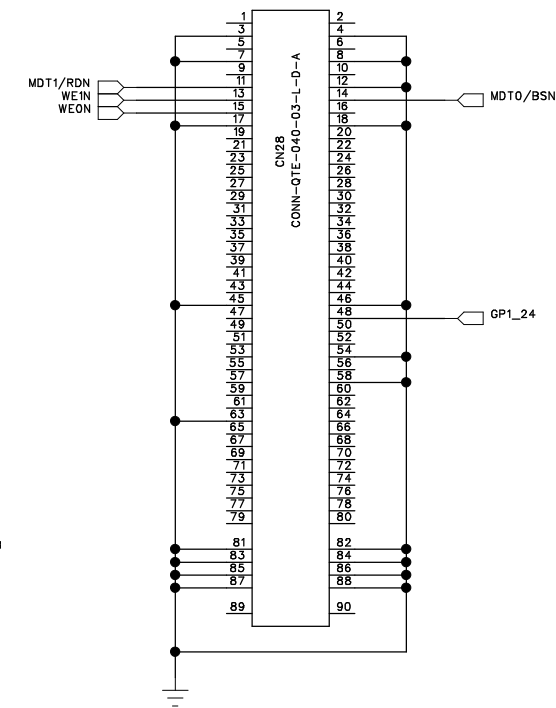
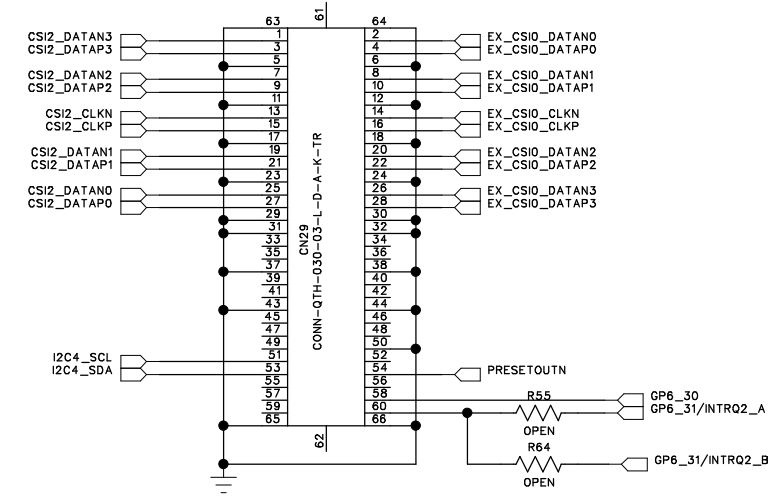
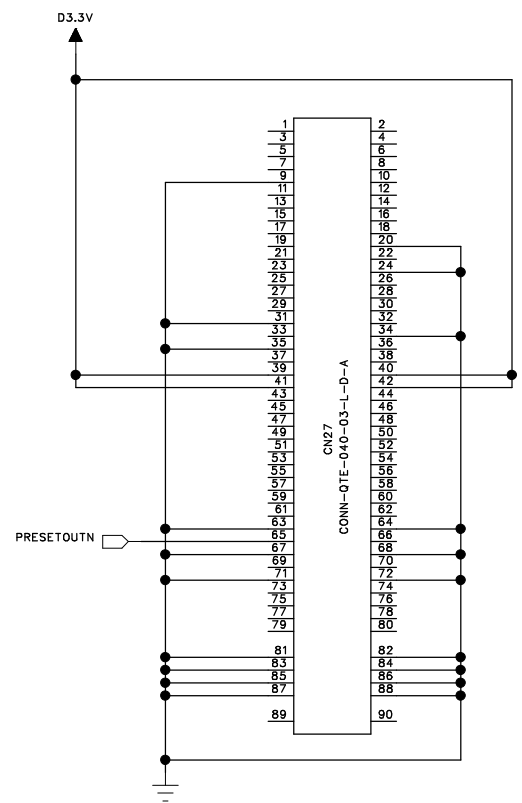
4

3

2

1

REVISION RECORD			
LTR	ECO NO:	APPROVED:	DATE:



D

D

C


C

B

B


A

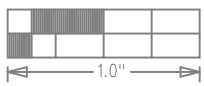
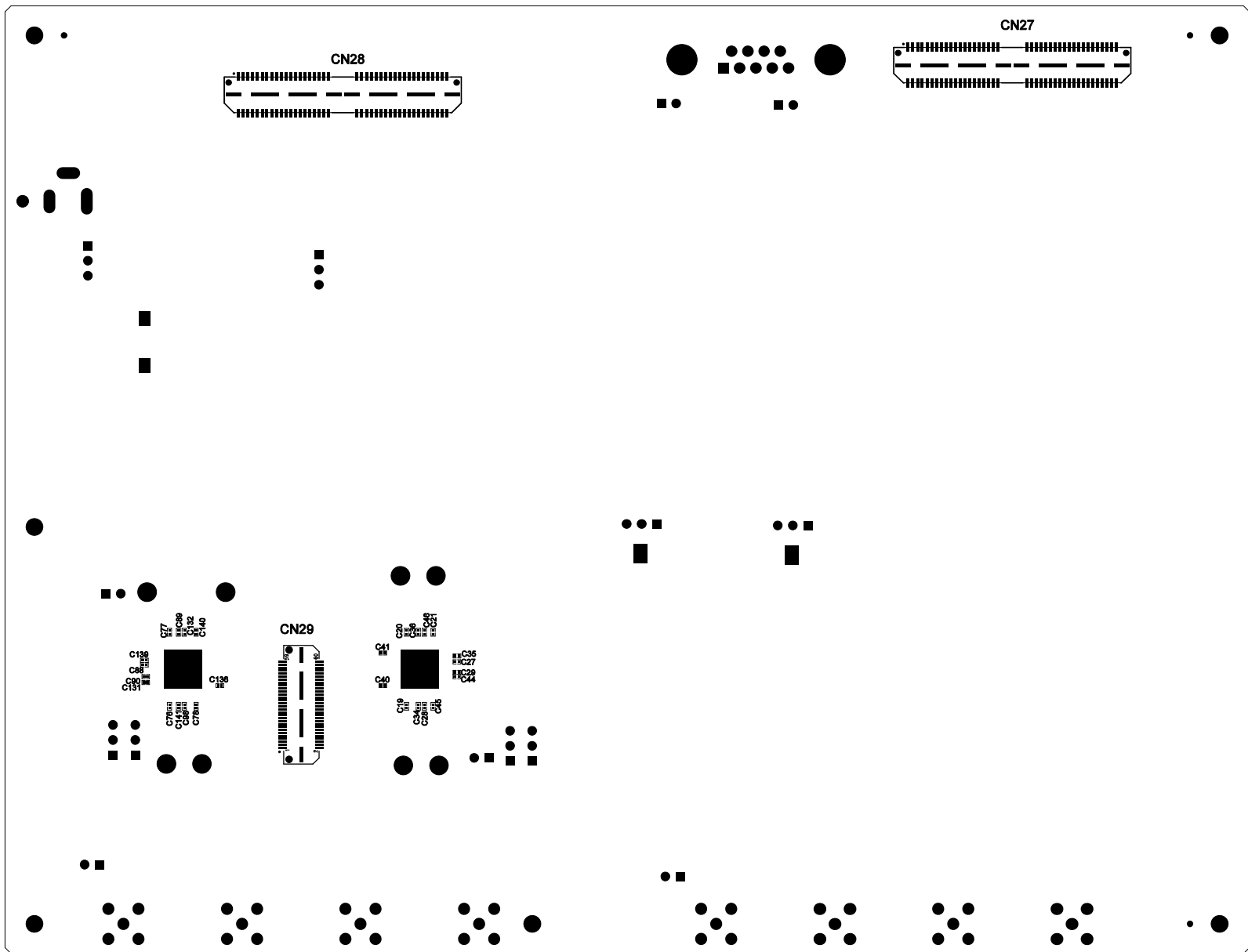
A

COMPANY:  **maxim integrated™**

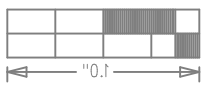
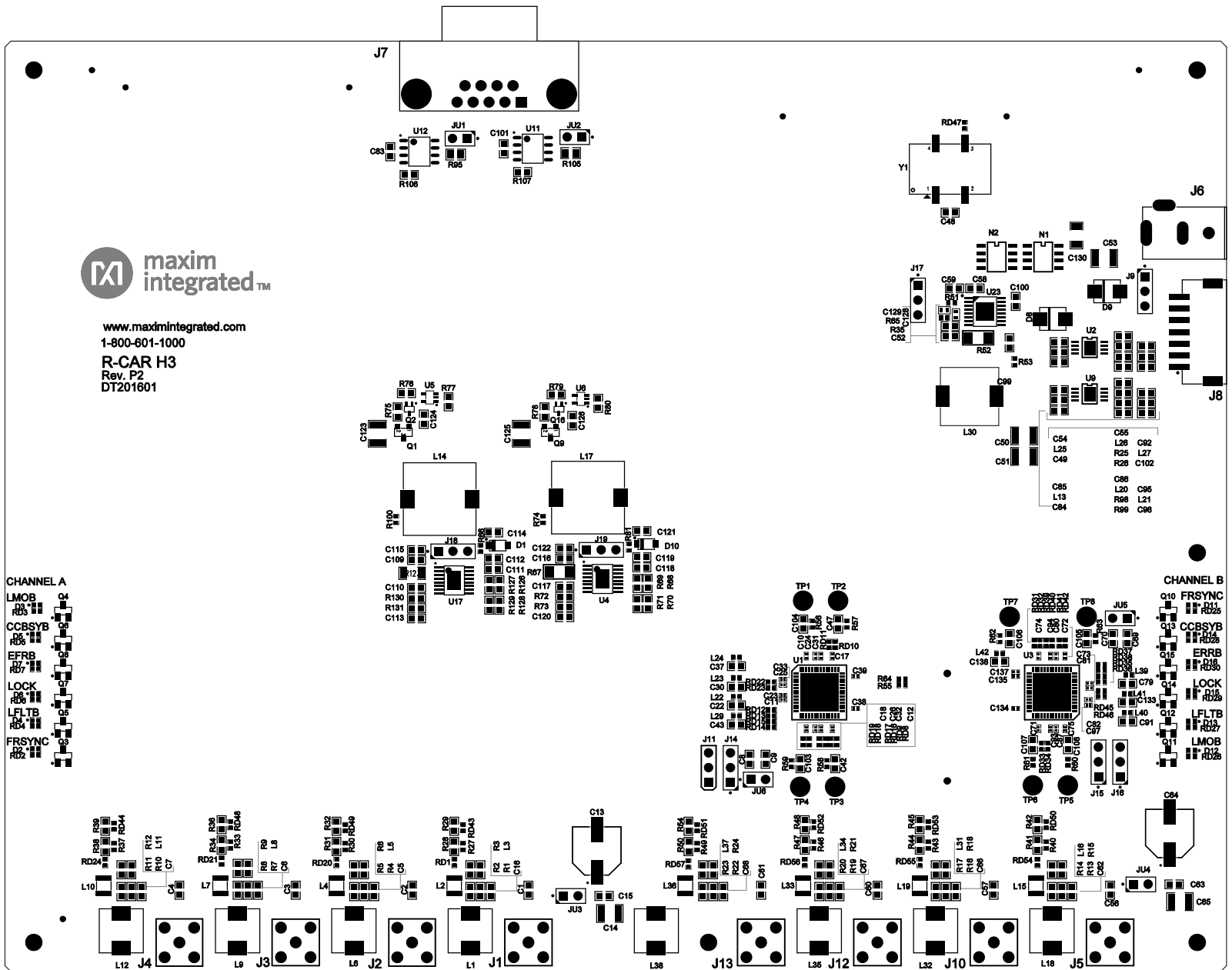
TITLE: **R-CAR H3**

DRAWN: Dan Thai	DATED: 01/13/2016	CODE:	SIZE: C	DRAWING NO: 20150706	REV: P2
CHECKED:	DATED:	SCALE:		SHEET: 5 OF 5	
QUALITY CONTROL:	DATED:				
RELEASED:	DATED:				

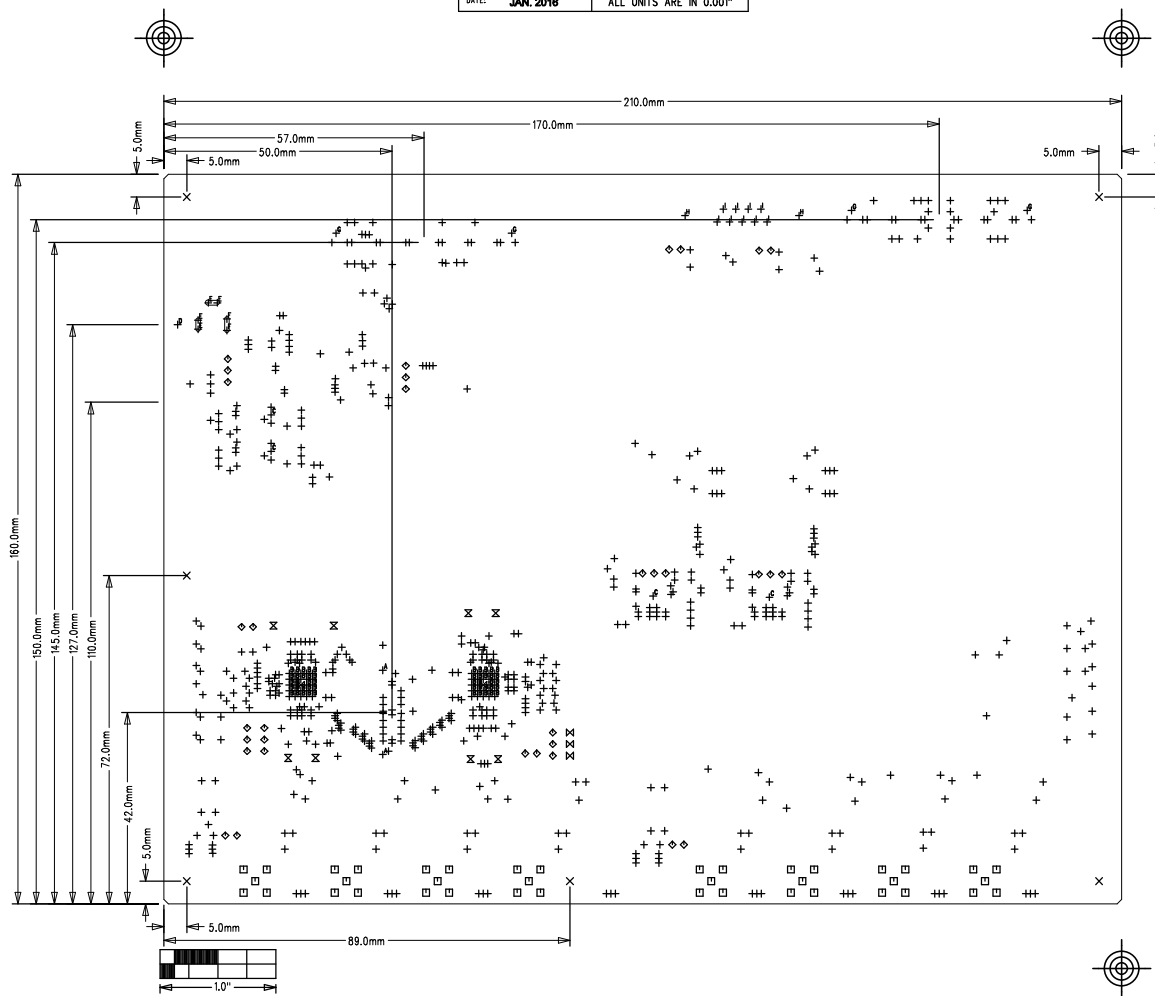
R-CAR H3		REV P2
 PROPERTY OF maxim integrated™		
LAYER ASSEMBLY DRAWING TOP		
DATE:	JAN. 2016	ALL UNITS ARE IN 0.001"



REV P2	R-CAR H3
PROPERTY OF maxim integrated™	
ASSEMBLY DRAWING	
DATE: JAN. 2018	ALL UNITS ARE IN 0.01"



R-CAR H3		REV P2
PROPERTY OF maxim integrated		
LAYER DRILL & MECHANICALS		
DATE: JAN. 2016	ALL UNITS ARE IN 0.001"	



NOTES: UNLESS OTHERWISE SPECIFIED

- FABRICATE USING PROVIDED GERBER FILES PER LATEST REVISION OF IPC-A-600 UNLESS OTHERWISE NOTED.
- MATERIAL: RoHS COMPLIANT FR-408 WITH $T_g \geq 170$ AND COMPATIBLE WITH LEAD-FREE SOLDERING PROCESS
- BOARD DIMENSIONS: 8.25" x 6.25" +/- 0.010". BOARD THICKNESS: 0.062"
- LAYERS: 6. SEE LAYER STACKUP CHART.
- MINIMUM TRACE/SPACING: 5MILS/4.5MILS
- COPPER CLAD FINISH: 1oz ON OUTER LAYERS
1oz ON INNER LAYERS
- SURFACE MOUNT PADS: 630.
- SOLDERMASK: TAIYO PSR-4000, SMOBC.
SOLDERMASK APERTURE TOLERANCE: +/- 0.0005".
- LEGENDS: WHITE, DOUBLE-SIDED, NON-CONDUCTIVE EPOXY INK OR EQUIVALENT. CLIPPED ALL LEGENDS FROM EXPOSED METAL.
- PLATING: MUST BE LEAD FREE AND RoHS COMPLIANT.
- FINISH: 3-8u" IMMERSION Au OVER 100u" Ni.
- VENDOR LOGO & DATE CODE: ALLOWED IN INK ON BOTTOM SIDE ONLY. DATE CODE FORMAT MUST BE YYYY MM ONLY.
- THRU HOLES: 0.001" MIN.
- TOLERANCES:
PLATED-THRU HOLES: +/- 0.003"
PATTERN-TO-PATTERN: +/- 0.005"
LEGEND TO LEGEND: +/- 0.007"
- CLIP SILKSCREEN THAT TOUCHES THE PAD
- DO NOT ADD SOLDER PASTE ON J13 PINS

LAYER	100 OHM DIFFERENTIAL TRACE SPACING			50 OHM SINGLE-ENDED TRACE			MATERIAL	THICKNESS
	WIDTH	SPACING	TRACE WIDTH	TRACE WIDTH	SPACING	TRACE WIDTH		
LAYER 1 Signals/GND TOP	7	8	7	9	N/A	N/A	PREPREG Er=4.5	0.70MIL
LAYER 2 GND							PREPREG Er=4.5	11.0MIL
LAYER 3 POWER							PREPREG Er=4.5	11.0MIL
LAYER 4 POWER							CORE	AS NEEDED
LAYER 5 GND							PREPREG Er=4.5	11.0MIL
LAYER 6 Signals/GND BOTTOM	7	8	7	9	N/A	N/A	PREPREG Er=4.5	11.0MIL

ALL DIMENSION IN MIL (0.001 INCH) UNLESS OTHERWISE SPECIFIED.
N/A - NOT AVAILABLE. DO NOT ROUTE TRACES OF THIS TYPE ON THE INDICATE LAYERS.
IMPEDANCE CONTROL TOLERANCE +/- 10%

SIZE	QTY	SYM	PLATED	TOL
8	632	+	YES	+/-3
10	48	+ ^B	YES	+/-3
30	4	+ ^E	YES	+/-3
35	5	+ ^D	YES	+/-3
39.37 x 118.11	2	+ ^E	YES	+/-3
39.37	4	+ ^B	NO	+/-3
39.37 x 137.8	1	+ ^E	YES	+/-3
40.16	33	◇	YES	+/-3
40.94	9	+ ^L	YES	+/-3
47.24	2	+ ^A	NO	+/-3
55.12	40	□	YES	+/-3
62.99	8	⊗	YES	+/-3
78.74	1	+ ^B	NO	+/-3
114.17	6	⊗	NO	+/-3
125.2	2	+ ^H	YES	+/-3